

Blue/White Light Table

SERVA
■ serving scientists ■

Dual LED Blue / White Light Transilluminator

The SERVA Blue/White Light Table, as an innovatively designed transilluminator with dual light sources, is applicable in various Life Sciences research areas for observing and analyzing the nucleic acids and proteins. Given its most optimal and humanized design for the post-observation applications, such as gel cutting and data imaging and filing, it is desired to provide the researchers with a brand-new comfortable, convenient, and safe experience.



White Light Mode

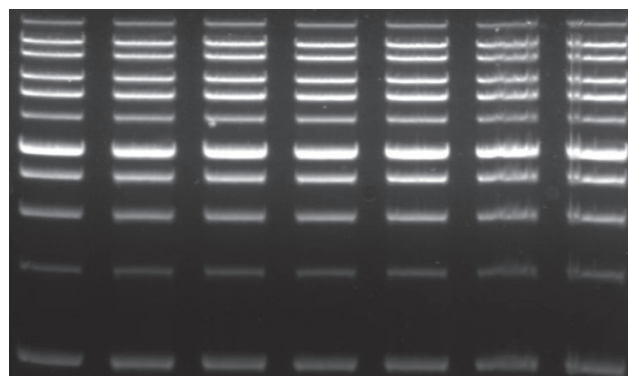
By using the whole-wavelength white LED light as the excitation light source, the White Light mode exhibits softness and uniformity and is applicable for observing or imaging the SDS-PAGE gels that are stained with the Coomassie® Blue or silver stain. It can also be employed as a simple film-viewing transilluminator for checking the X-Ray film for the research or clinical purpose. With the light intensity adjustment function, the contrasting adjustment of the light intensity is enabled at three levels according to the observational requirements for achieving the best imaging quality.

- Dual Light Sources
- Magnetic Filter Bottom-Up LED Illumination
- Adjustable Light Intensity (3 Levels) 5 Minute Automatic Power-Off Designer Metal Housing
- Exquisite and Compact Design
- Enhanced Portability with the Power Bank



Blue Light Mode

With the 470 nm LED light as the excitation light source, the Blue Light mode is applied for observing the qualitative and quantitative nucleic acid or protein experiments using the fluorescent staining reagents. Other than being compatible with our safe reagents, such as the SERVA Lightning Red, SERVA Fluo-Y, Novel Juice, Novel Green, Novel Green Plus, OnePCR series, Nimble Juice, and Nimble Juice R-TYPE, it also performs well with a majority of fluorescent staining products on the market, such as SERVA HiSens Stain G, SERVA DNA Stain Clear G, SYBR Gold, SYPRO Ruby, SYPRO Orange, and Coomassie® Fluor Orange stains. The feature of allowing light intensity adjustment at three different levels enables the user to make the light intensity contrast adjustment based on the sample concentration for achieving the best imaging quality. Further, the magnetic amber filter, with the hinges-free design, offers simplicity, safety, and convenience when opening and closing the filter.



Blue/White Light Table

SERVA
■ serving scientists ■

Dual LED Blue / White Light Transilluminator

Dual Light Sources

LED White Light and Blue Light: Broad ranges of applicability and compatibility in basic science and medical diagnosis research fields.

Magnetic Filter

The hinges-free design offers simplicity, safety, and convenience to the user and will not cause any damage to the filter near the hinges. Conducting the observation and gel-cutting does not require the protective goggles.

Bottom-Up LED Illumination

It prevents the interference from the reflective lights that are caused by the side illumination, thus improving the observational and imaging quality. Since the LED lights are enduring and safe, it does not cause damage to the eyes and skin or to the experiment sample as normally found with the UV illumination.

Adjustable Light Intensity (3 Levels)

Adjusting the light intensity and contrast based on the sample quantity or observational requirement will achieve the best observational or imaging quality.

5 Minute Automatic Power-Off

It protects the transilluminator from the risk that is caused by the user's operational negligence.

Designer Metal Housing

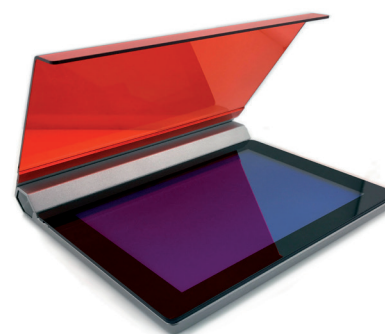
The transilluminator's base is rendered more stable, thus facilitating the operational process.

Exquisite and Compact Design

It offers the ease of mobility and storage and is suitable for the experimental observation during the field study.

Enhanced Portability with the Power Bank

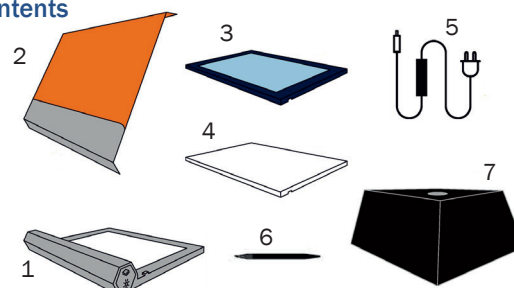
Hassle-free for performing the outdoor experiment. Please note: The power bank is not included in the package and needs to be purchased by the user.



Specifications

| | |
|-------------------------------|--|
| Unit Dimensions (W x L x H) | 18.5 cm x 22 cm x 3 cm |
| Gel Viewing Dimensions (W*L) | 12 cm x 18 cm |
| Input Voltage: | 100-240 Vac |
| Input Current | 2.0 A |
| LED Source | Built-in blue light & white light LED module |
| LED life (hours) | >30,000 |
| Emission maxima (nm) | 470 nm |
| Store temperature | 25 °C |
| Automatic Power-Off | 5 min |
| Filter Type | Amber filter (580nm) |
| Certifications | CE/ETL |

Contents



- 1: Dual LED Blue /White Light Transilluminator Base
- 2: Amber Filter Cover
- 3: Blue Uniform Plate w Glass
- 4: White Uniform Plate
- 5: PowerCord
- 6: Gel-Cutting Knife and Replacement Blade
- 7: miniDarkroom

Ordering Information

| Product | Size | Cat. no. |
|------------------------------|---------|----------|
| SERVA Blue/White Light Table | 1 piece | BWL-T |